

MDR INSIGHTS

Social Emotional Learning

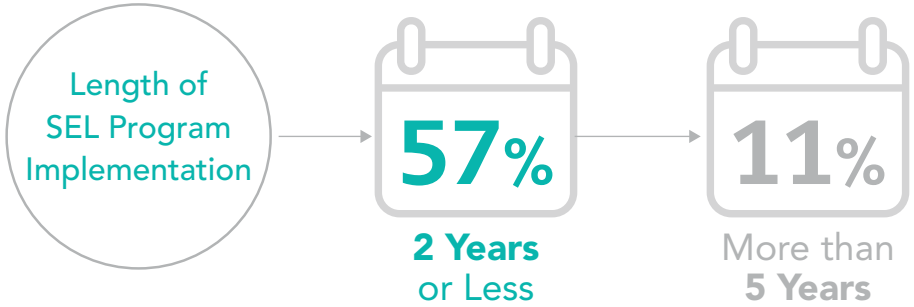
A Shift from the Guidance Office to the Classroom

Social Emotional Learning (SEL) is growing in K-12 education as educators look for ways to reduce discipline problems, build a positive school climate, and boost academic success.

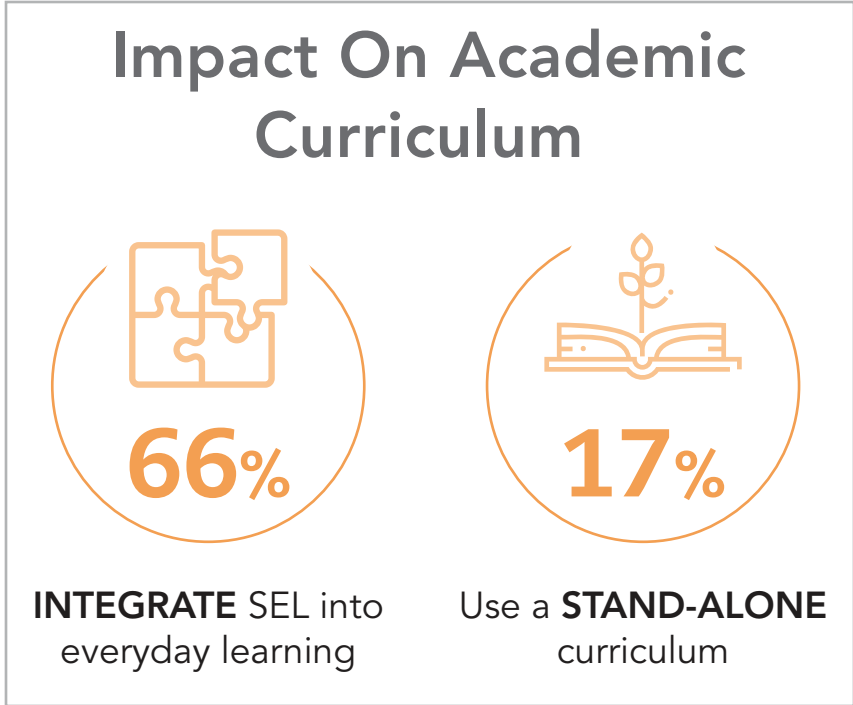
As SEL becomes more widespread, there are opportunities for providers to close those gaps and address the needs of educators and students.

MDR's **Social and Emotional Learning in Schools** report presents trends about SEL in schools based on survey responses from K-12 educators.

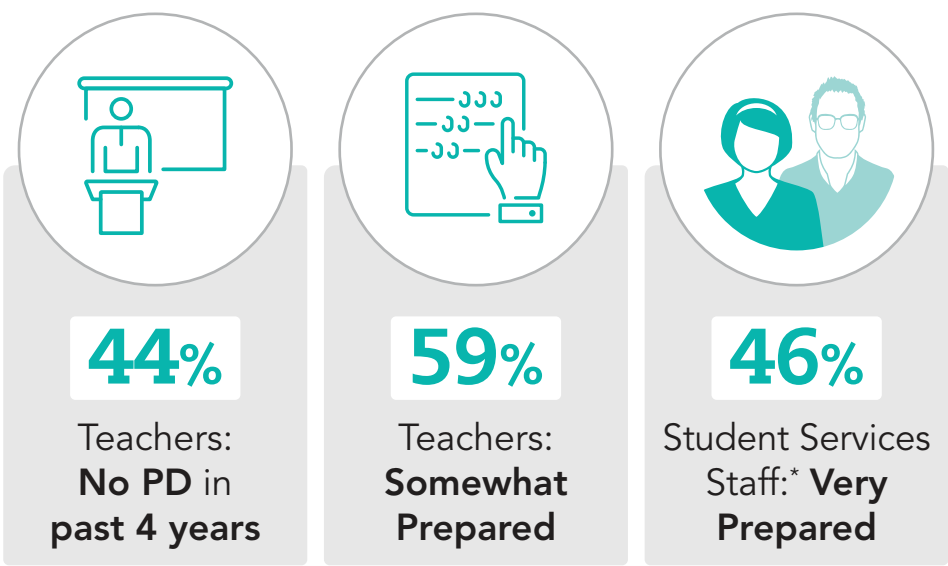
A Growing Trend in Schools



Top Reasons For Implementation



Teachers Need Help



*Includes Guidance Counselors, Social Workers, and School Psychologists

Top Barriers To Social Emotional Learning

